



YOSHIMURA

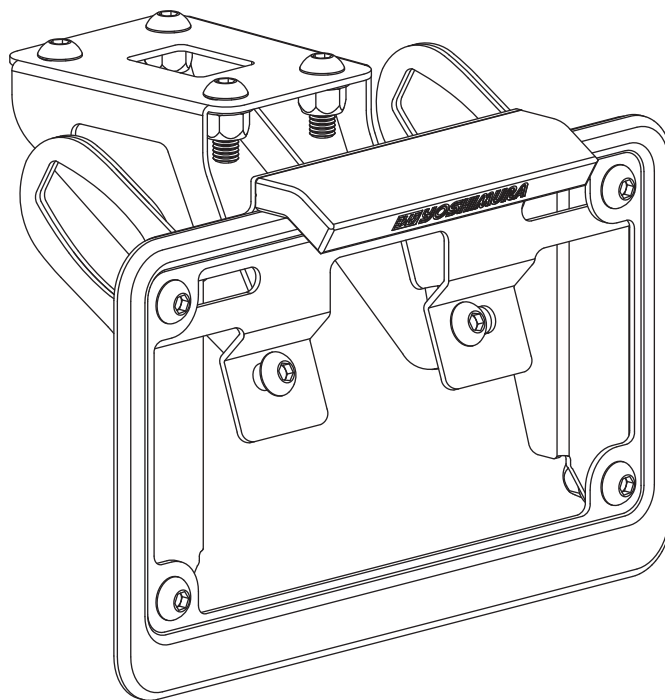
RESEARCH&DEVELOPMENT OF AMERICA, INC.

5420 DANIELS STREET STE A, CHINO CA., 91710 · (800)634-9166 · (909)628-4722 · FACSIMILE (909)591-2198

www.yoshimura-rd.com

FENDER ELIMINATOR KIT

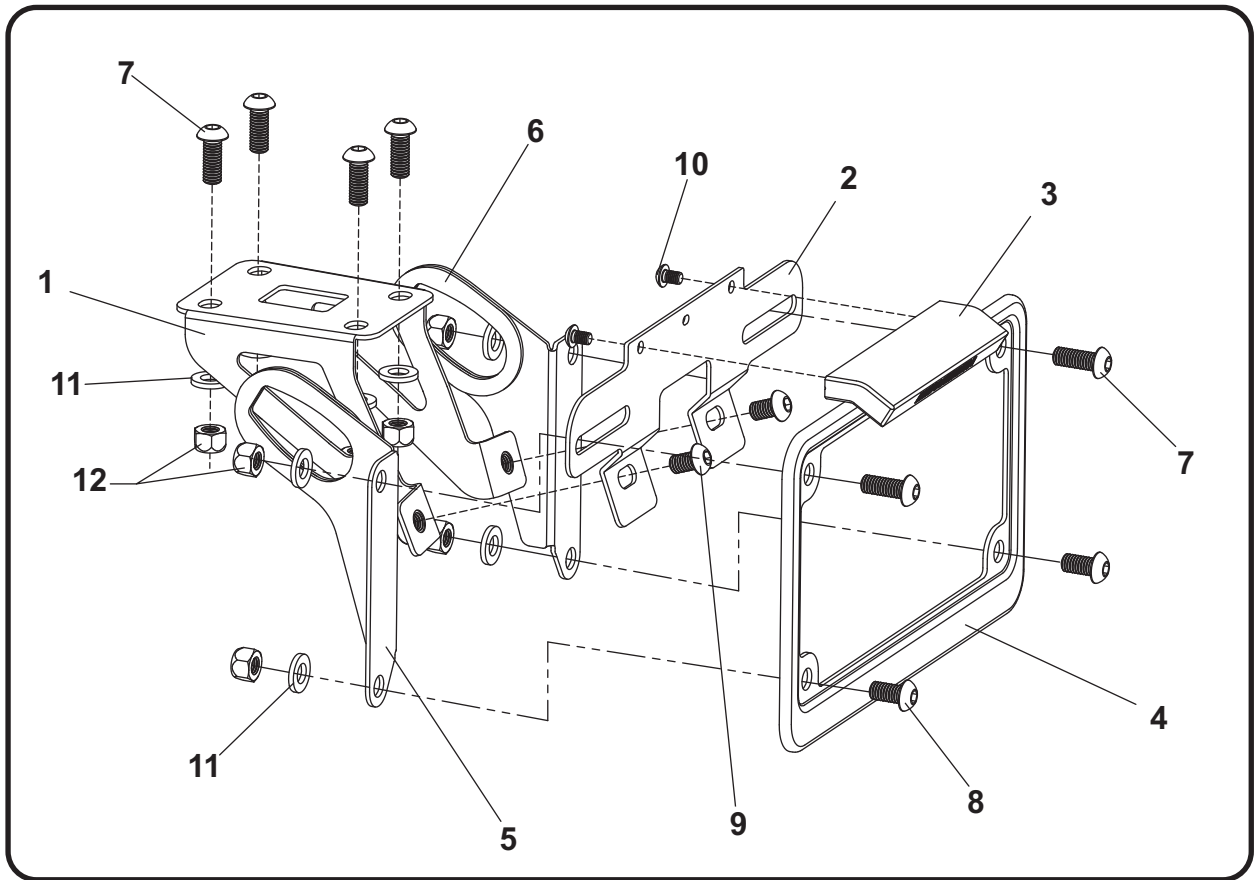
070BG141510
Kawasaki Z1000



THIS PRODUCT IS NOT DOT APPROVED.

Yoshimura R&D of America, Inc. is not liable or responsible for any resulting event caused by the installation of this product. Check with local laws and regulations for compliance prior to installation and use. This product is not intended for use on public highways.





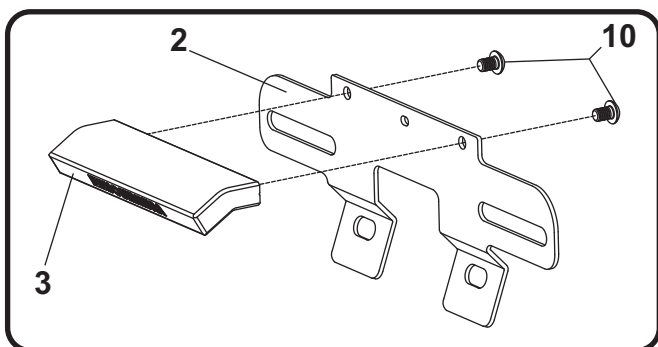
No.	Item	Description	Qty.
1	14151-FEBKT	Fender Eliminator Bracket	1
2	12200-FEBKT	License Plate bracket	1
3	070BG-LH-K	LED License Plate Light	1
4	070BG-LPF	License Plate Frame	1
5	14650-TSL-BKT	Left Turn Signal Bracket	1
6	14650-TSR-BKT	Right Turn Signal Bracket	1
7	M6X16BHS	6mm x 16mm Button Head Screw	6
8	M6X12BHS	6mm x 12mm Button Head Screw	2
9	M6X10BHS	6mm x 10mm Button Head Screw	2
10	M4X6BHS	4mm x 6mm Button Head Screw	2
11	6MMWASHER	6mm Washer	8
12	6MMLN	6mm Nylon Lock Nut	8
**	94785-01-ND	Butt Connectors	2
**	ZT-300	Cable Ties	3
**	17029	Yoshimura Sticker Sheet	1

Removal

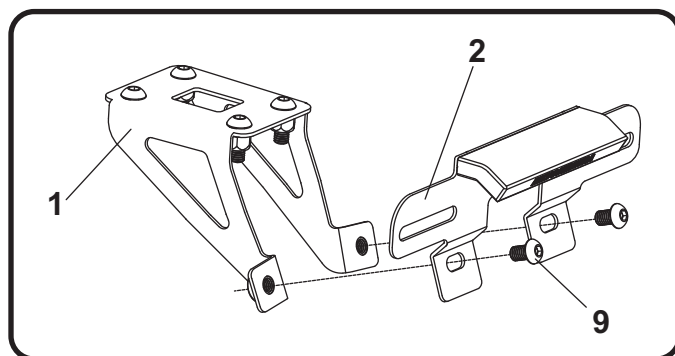
1. Remove passenger and rider seat.
2. Remove left and right rear side cover as per Factory Service/Owners Manual.
3. Remove the four bolts securing the rear frame cover to the frame. Remove the frame cover to access license plate light and turn signal connectors.
4. Disconnect the license plate light and rear turn signal connectors.
5. While supporting the stock fender assembly, remove the four screws and two tapping screws securing the fender assembly to the frame.
6. Disassemble the stock fender assembly and remove left and right turn signals.
7. Cut the stock license plate light connector from the stock fender assembly. Be sure to cut at least a 6" section of wire from the connector.

Installation

1. Install (No. 3) *070BG-LH-K*, Yoshimura license plate light onto (No. 2) *12200-FEBKT*, Yoshimura license plate bracket using (No. 10) *M4X6BHS*, 4mm button head screws provided in the kit.



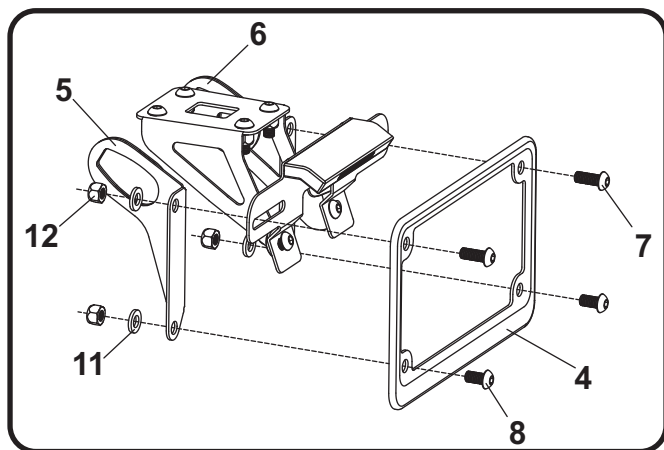
2. Install (No. 1) *14151-FEBKT*, fender eliminator bracket using (No. 7) *M6X16BHS*, 6mm button head screws along with (No. 11) *6MMWASHER* and (No. 12) *6MMLN*, washer and nut provided in the kit.
3. Install (No. 2) *12200-FEBKT*, license plate bracket onto (No. 1) *14151-FEBKT*, fender eliminator bracket using (No. 9) *M6X10BHS*, 6mm button head screws as shown in the diagram below.



4. Using the *94785-01-ND* butt connectors provided in the kit, connect the Yoshimura license plate light wires to the stock license plate light wires as follows:

Green Wire -to- Red
Black/Yellow Wire -to- Black

5. Install stock left and right turn signals onto (No. 5,6) *14650-TSL/R-BKT*, turn signal brackets.
6. Install (No. 5,6) *14650-TSL/R-BKT*, left and right turn signal brackets and (No. 4) *070BG-LPF*, license plate frame using the (No. 7,8) *M6X16BHS* and *M6X12BHS*, 6mm button head screws as shown below.



7. Route license plate light and turn signal wires under passenger seat and reconnect.
8. Re-install frame cover using the four stock bolts.
9. Re-install left and right side covers.
10. Re-install rider and passenger seat.
11. Check for proper function of license plate light, turn signals, brake light, and that all brackets and components are secure prior to riding.